



## RNLI All-Weather Lifeboat Centre

Poole, UK

Unity SGL,  
Vepps HPL &  
SGL Lockers

### The project.

The Royal National Lifeboat Institution (RNLI) have been saving lives at sea in the UK and Republic of Ireland since 1824. The charity recently pledged to provide each all-weather lifeboat crew with a 25-knot lifeboat, which meant they needed to build 6 new all-weather lifeboats a year while maintaining the existing fleet. To deliver on this promise, the RNLI built a new All-Weather Lifeboat Centre (ALC) at their Support Centre in Poole, Dorset.

### The challenge.

The new facility brings every stage of the lifeboat building process in-house so the RNLI is fully equipped to build the next generation of all-weather lifeboats. Durable and hardwearing toilet and shower systems were required to withstand the demands of the busy site. We worked with Accredited Installers T-IPS to advise Spetisbury Construction of suitable washroom solutions for the staff toilet, shower and changing areas.

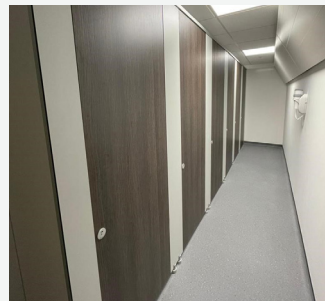
### The solution.

Our Unity cubicle range offers great value without compromising on quality or functionality. For these reasons, plus many other benefits, Unity was selected for both the toilet and shower cubicles. With its minimalist, flush fronted design, it's a popular and economical commercial washroom solution. Specified in Solid Grade Laminate (SGL) the cubicles are not only totally impervious to water but also impact, heat and scratch resistant, an ideal choice for busy and wet washrooms.

Our pre-plumbed panelling system Vepps offered T-IPS 50% faster installation times, when comparing to plain panel alternatives, and will make ongoing maintenance quick and easy. All sanitaryware and brassware was pre-plumbed and tested at our manufacturing facility for added peace of mind. Ideal for changing areas, shelf height Vepps was specified while full height IPS was selected for the urinals.

"We're so proud to have completed work for such a valuable and worthwhile charity. The RNLI are absolute superheroes and so we needed to fit products worthy of that status - Venesta more than met the brief here."

**- T-IPS, Venesta Accredited Installers**



Our tried and tested Model Z Active Lockers were specified for the shower and changing areas. Our lockers are sturdy, heat and impact resistant and impervious to water, with doors, carcasses and trays all in SGL. Model Z lockers are ideal for changing rooms as there's ample room for personal items as well as hanging facilities for clothing, uniforms or towels.

To complement the modern design of the building, the toilet and shower cubicles were designed in contrasting 'African Wenge' and 'Suede' finishes. The Vepps IPS panelling was specified in matching 'Suede' with 'Gunmetal' flashgaps and 'African Wenge' tops to the basin shelf height units. The RNLI took the opportunity to add pops of colour into their washroom design through their lockers, where they opted for 'Golden' and 'Indigo' doors to complement our 'Suede' finish.

We're thrilled to have delivered a complete commercial washroom package to the RNLI and are sure the systems will stand the test of time in the bustling hub.